



Corporate Parenting Report

March. 2013

**Children Looked After
Children Subject to a Child Protection Plan**

(Activity to end of March 2013)





CONTENTS

PART A: PERFORMANCE INFORMATION	3
A1) KEY PERFORMANCE INDICATORS	3
PART B: CHILDREN LOOKED AFTER (CLA)	5
B1) AGE GROUPS	5
B2) GENDER	6
B3) ETHNICITY	7
B4) PLACEMENT TYPE	8
B5) CLA EDUCATION	9
PART C: CHILDREN SUBJECT TO A CHILD PROTECTION PLAN (CPP)	10
C1) AGE GROUPS	10
C2) ETHNICITY	11
C3) GENDER	12
C4) CATEGORY OF ABUSE	13
C5) DURATION OF PLAN	14
Part D:	
D1) NUMBERS OF CLA & CPP	15

Part A– Key Performance Indicators

PI Ref	PI Description	England average 10/11	Best National 10/11	Best London 10/11	Harrow 10/11	Harrow 11/12	Target 12/13	Q1 12/13	Q2 12/13	Q3 12/13
NI 59	Timeliness of Initial Assessments (% complete in 10 working days)	75.5	Oldham (98.3) N Lincolnshire (98.2) C Bedfordshire (98.1)	K&C (97.3) Islington (95.0) Camden (94.3)	85.5	71.4	85.0	53.6	52.1	43.2
NI 60	Timeliness of Core Assessments (% complete in 35 working days)	78.1	NE Lincolnshire (98.8) Oldham (97.2) Lambeth (95.4)	Lambeth (95.4) Richmond (90.8) Enfield (89.6)	80.5	83.6	83.0	68.7	65.3	63.7
NI 61	Timeliness of CLA adoptions following agency decision (%)	74.0	Ealing (100) Herefordshire (100) Reading (100)	Ealing (100) Lewisham (84.6) Southwark (82.4)	83.3	100.0	80.0	-	100.0	100.0
NI 62	CLA placement stability: number of moves (% with 2+ moves)	10.7	Cambridgeshire (1.3) NE Lincolnshire (3.4) Northumberland (4.5)	Barnet (6.3) H&F (6.4) Islington (7.5)	15.0	16.2	11.0	2.0	6.9	9.8
NI 63	CLA placement stability: length of placement (%)	68.6	Halton (87.0) Bournemouth (86.0) Kingston (84.6)	Kingston (84.6) Westminster (81.1) Wandsworth (77.3)	66.7	71.4	68.0	69.2	71.4	55.0
NI 64	Ceased CPP that lasted 2 or more years (%)	6.0	Rutland (0.0) Stoke-on-Trent (0.0) Wiltshire (0.0)	K&C (2.1) Lambeth (2.9) Islington (3.0)	17.2	18.1	12.0	11.6	9.9	12.3
NI 65	CPP for 2nd or subsequent time (%)	13.3	Liverpool (2.1) Bexley (2.1) Milton Keynes (2.4)	Bexley (2.1) Richmond (3.9) Waltham Forest (4.3)	8.8	14.2	10.0	10.0	10.6	10.2
NI 66	Timeliness of CLA reviews (%)	tbc	tbc	tbc	96.8	98.6	100.0	-	98.7	95.5

NI 67	Timeliness of CPP reviews (%)	97.1	68 LAs with 100%	16 London LAs with 100%	100.0	100.0	100.0	100.0	100.0	100.0
NI 147	% of Care Leavers in suitable accommodation	89.8	Ealing (100) Wandsworth (100) Havering (100)	Ealing (100) Wandsworth (100) Havering (100)	91.7	72.7	88.0	44.4	75.0	63.2
NI 148	% of Care Leavers in education, employment or training	61.2	North Tyneside (88) Tower Hamlets (87) Knowsley (84)	Bexley (80) Richmond (80) Lambeth (79)	66.7	31.8	75.0	11.1	50.0	47.4

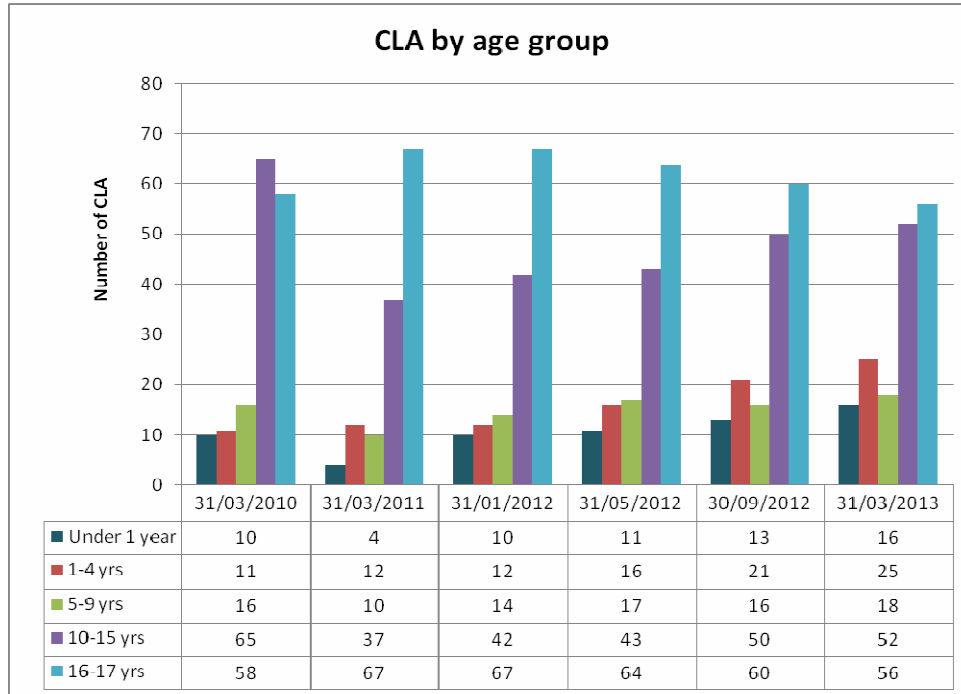
-  Dark Green represents top quartile (best 25%)
-  Light Green represents third quartile.
-  Amber represents the second quartile.
-  Red represents the bottom quartile (worst 25%)

Bandings are currently based on Local Authority scores for 2010/11
+ = Bandings for quarter three are based on recently DfE published data for 2011-12

Part B: Children Looked After (CLA)

Harrow's numbers & rate of looked after children have historically been lower than England & statistical neighbours. At 31st March 2013 there are 167 children looked after. Harrow has a higher proportion of males who are looked after and also a considerably higher proportion of 16-17 year olds in the care system.

B1 - Age Group



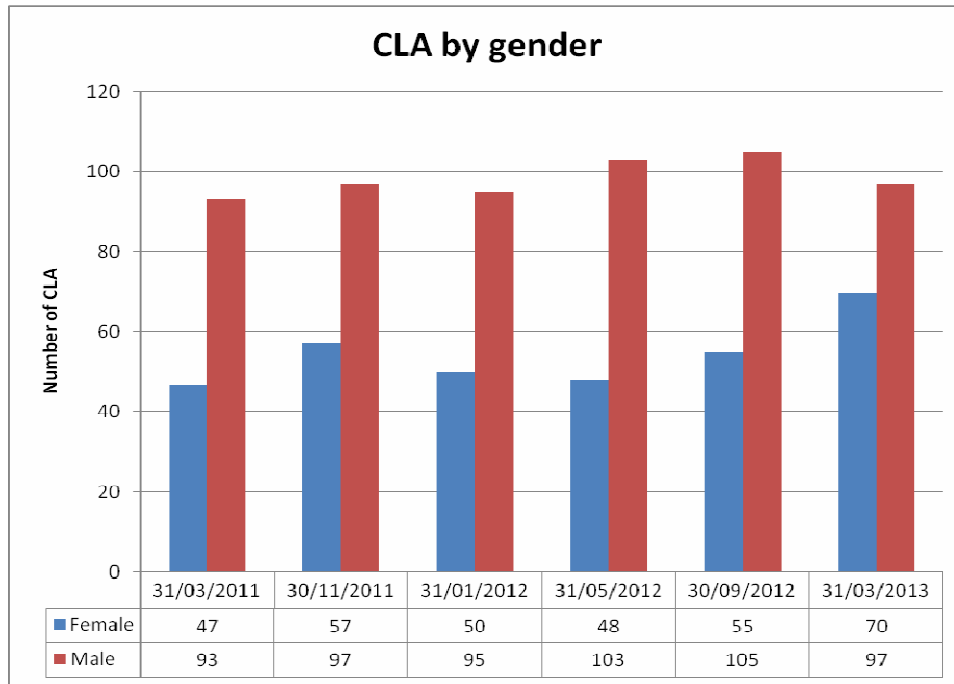
There is a slight decrease in 16-17 year olds and an increase in 10-15 year olds. 16-17 year olds remain the largest group.

We can see a 'bulge' moving through the years since 2009. Age group 10-15 years had dropped significantly as young people moved into the 16-17 age group and is in line with London and statistical neighbour average. With the recent increase we may see another bulge moving through. There is no single reason for the high numbers of older CLA.

Age 16 to 17 years has dropped slightly over the last year or so and we can expect it to drop further as more young people reach 18. The proportion is currently higher than England, London and statistical neighbour average.

Comparator Information for percentages of age of CLA at 31st March 2012 (Source: SSDA903)	Age at 31 March 2012 (years)				
	Under 1	1 to 4	5 to 9	10 to 15	16 -17
England	6	19	19	36	20
London	6	14	16	37	27
Statistical neighbours Average	6	14	15	35	30
Harrow (Numbers)	8% (15)	8%(15)	11%(15)	29%(45)	43%(70)

B2 - Gender



Harrow historically has a higher proportion of males who are looked after. However, the proportion of CLA who were female has increased from 32% at 31/05/2012 to 42% at 31/03/2013.

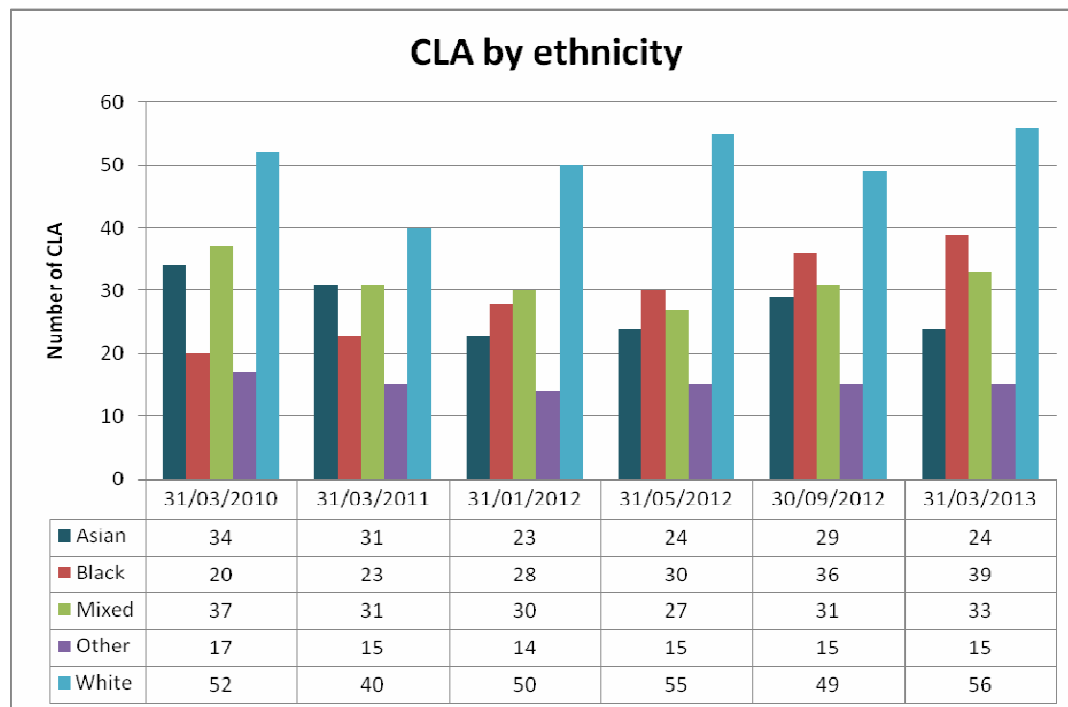
Comparator info CLA by gender 31.3.2012

Source: SSDA903

	Gender	
	Male	Female
<i>England</i>	55	45
<i>London</i>	56	44
<i>Statistical neighbours Average</i>	58	42
Harrow	68% (105)	32% (50)

B3 - Ethnicity

Harrow CLA ethnicity over time



As would be expected of Harrow's diverse population, the representation of BME groups is considerably higher than England and the statistical neighbour average.

Numbers are relatively small, so there can be significant changes relating to a small number of sibling groups e.g. drop in 'white' CLA at 31.3.2011

The number of CLA in the 'mixed' category remains much higher than the statistical neighbour average and the England average.

Comparator Information on Ethnicity % 31.03.2012

Source: SSDA903

	White	Mixed	Asian or Asian British	Black or Black British	Other Ethnic Groups
Harrow	34	18	15	23	10
Statistical Neighbour	46	15	16	20	6
England	78	9	4	7	3

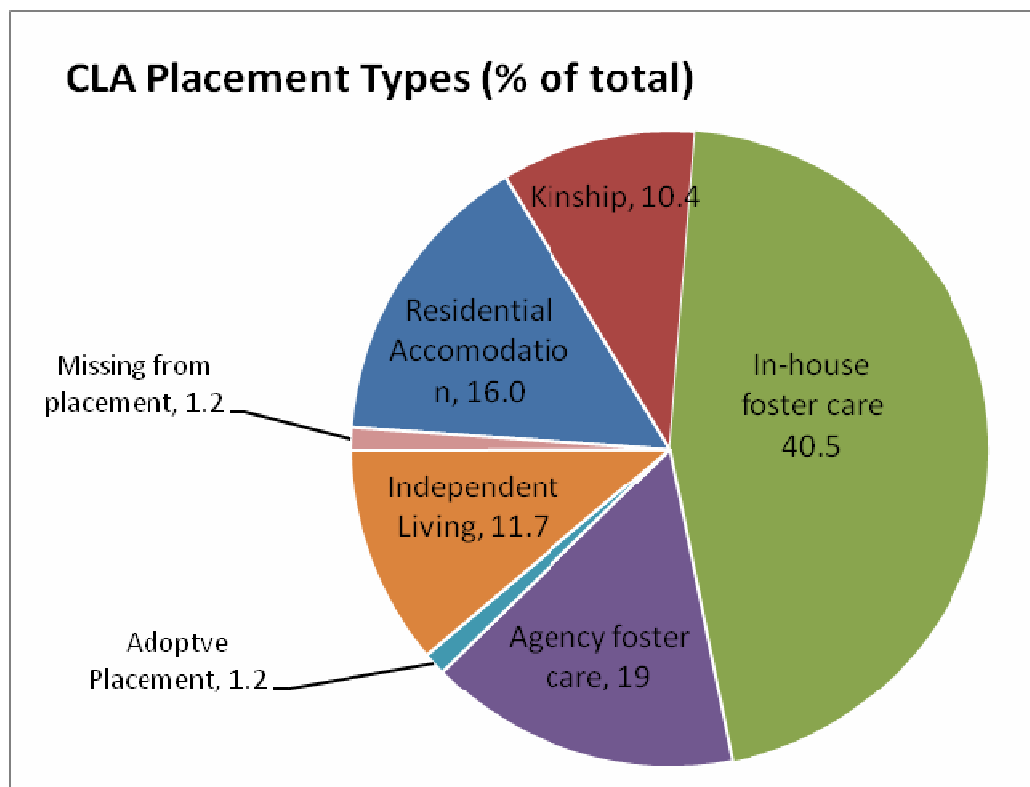
B 4 - Placements

Harrow has a lower proportion of children in foster placements and slightly higher proportion of children in residential schools.

Harrow Placement Numbers	Feb 2012	Feb 2013	Change
Placed for Adoption	0	2	2
Foster placement with Relative or Friend	9	17	8
Foster Carer – In-house	62	66	4
Foster Carer - Agency	23	31	8
Secure Unit	1	1	0
Young Offenders Institution or Prison	0	0	0
Placed with Parents	1	0	-1
Independent Living	22	19	-3
Residential Schools	11	10	-1
Children's Homes	15	10	-5
Other residential Accommodation	3	5	2
Missing from Placement	3	1	-2
Grand Total	147	160	13

Overall all types of foster care placements (71%) are now in line with statistical neighbours and England averages of around 72%. Numbers of in-house placements have increased with continuing focus to increase in-house provision. Particular challenges are faced with our older CLA cohort. Harrow continues to have a higher rate of older CLA living independently. Many asylum seeking young people are in this type of accommodation.

Harrow Placement Detail 28th February 2013



CLA Education Data

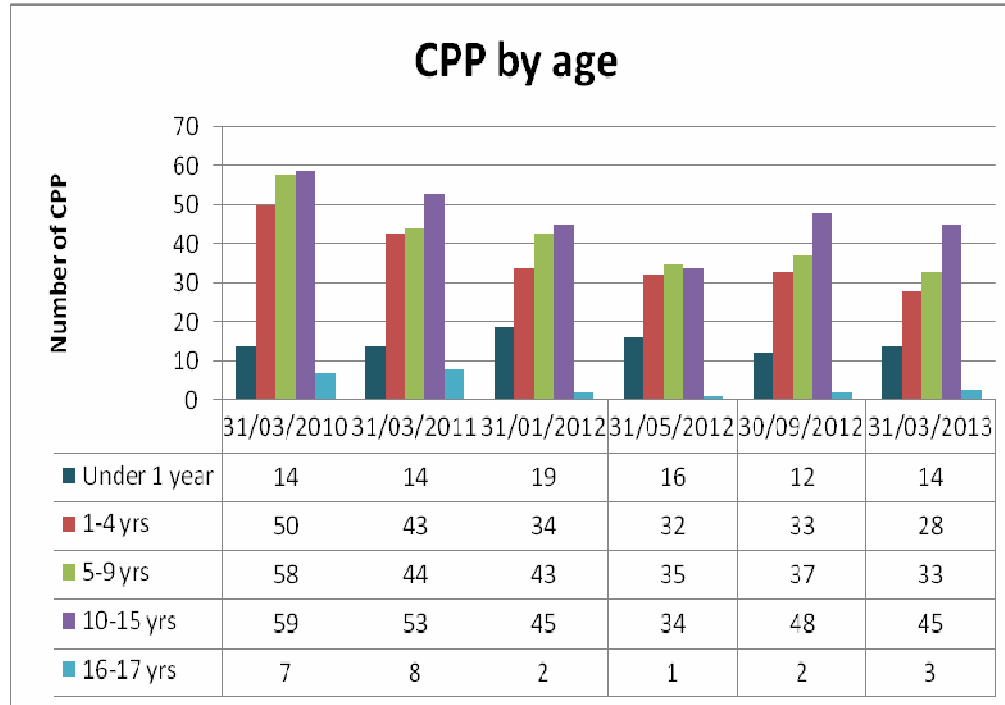
PI Description	Target 12/13	Jan 13	Feb 13	Comments
Number of school age CLA	-	75	78	
Number of school age CLA (1 yr +)	-	39	44	
% of school age CLA (1 yr +) permanently excluded this year (Sept to date)*	0	0	0	No CLA have had permanent exclusions so far this year
% of school age CLA (1 yr +) fixed-term excluded this year (Sept to date)*	10	5.1	4.5	2 of 44 children have had an exclusion who have been looked after 1 yr+
% CLA missing or absent from school for 25 days or more (Sept to date)	12	8.0	10.3	8 out of 78 school age CLA have been absent from school for 25 days (new academic year)
% of CLA absent from school (number of sessions)	12	7.3	8.8	590 out of 6725.5 days missed by 78 CLA (new academic year) (approx 1180 sessions)

*note that while indicators are standardised by including only CLA who have been looked after for more than one year, exclusions are monitored for all CLA

Part C: Children Subject to a Child Protection Plan (CPP)

Children are made the subject of a child protection plan (CPP) when they are considered to be at risk of physical, sexual, emotional harm or neglect. Overall Harrow has seen a decrease in the number of children with a CPP. Figures for 31st March 2012 show 131 children with child protection plans which is approximately 19% drop from previous year and 123 children on 31/03/2013.

C1 - CPP by Age



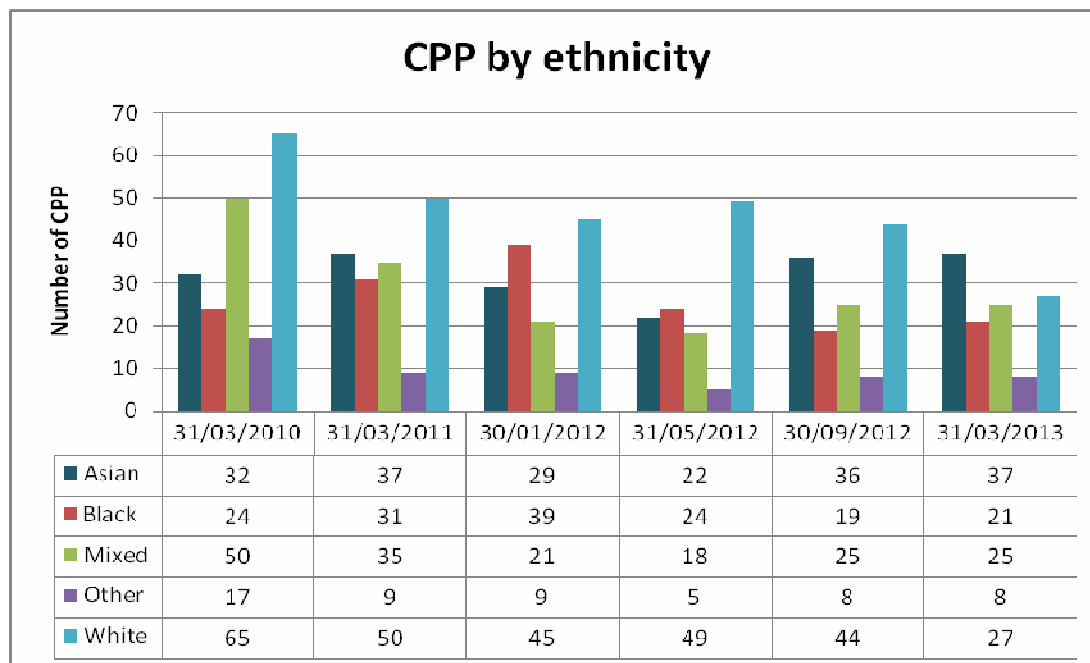
We have a higher proportion of children with CP plans in the 10 – 15 years age group similar to children looked after.

Comparator Information Ethnicity of Children subject to Child Protection Plans at 31st March 2012 (%)

Source: CiN Census

	Under 1	1-4 years	5-9 years	10-15 years	16 & over
England	13.40	30.50	28.50	25.20	2.20
London	13.25	29.43	29.28	26.35	1.85
Harrow	13.18	24.81	27.91	33.33	0.78

C2 - CPP by Ethnicity



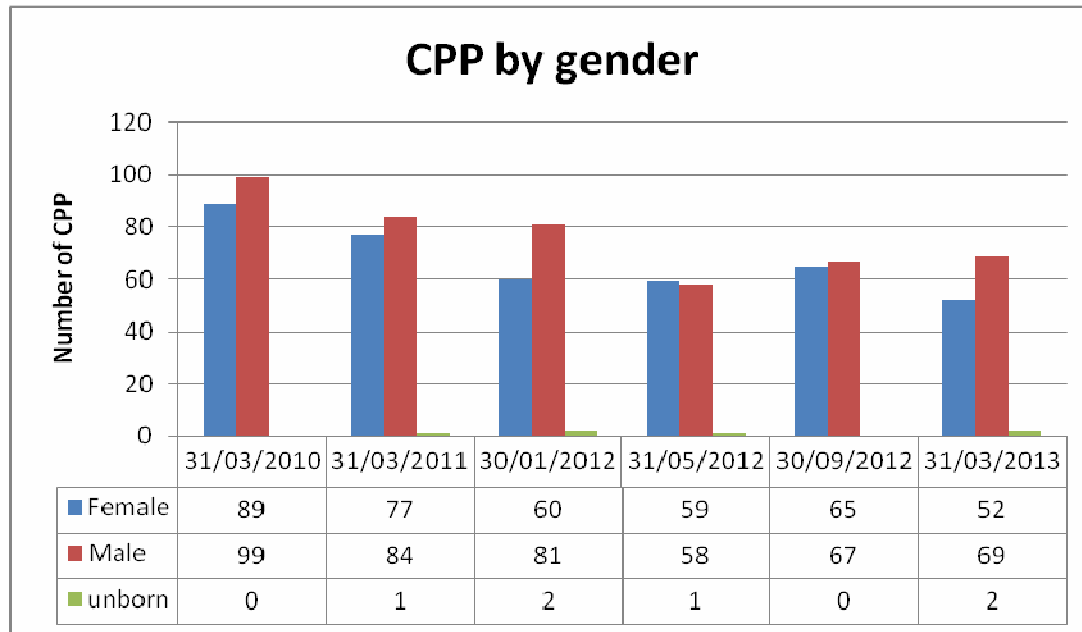
There is a decrease in children from White backgrounds having a CP Plan and an increase in Asian Children. The proportion of BME groups is considerably higher than England and statistical neighbour averages but this is as expected due to Harrow's diverse population. Two thirds of children requiring a child protection plan in Harrow are from BME groups

Comparator Information Ethnicity of Children subject to Child Protection Plans at 31st March 2012 (%)

Source: Cin Census

	White	Mixed	Asian or Asian British	Black or Black British	Other Ethnic Groups	Refused / Unknown
Harrow	34.1	14	25.6	24	2.3	0
London	45.1	15.3	12.2	21.6	2.77	3
England	75.9	7.9	5.4	4.9	1.2	4.6

C3 - CPP by gender



The gender of Harrow children with Child Protection plans is similar to London & England averages.

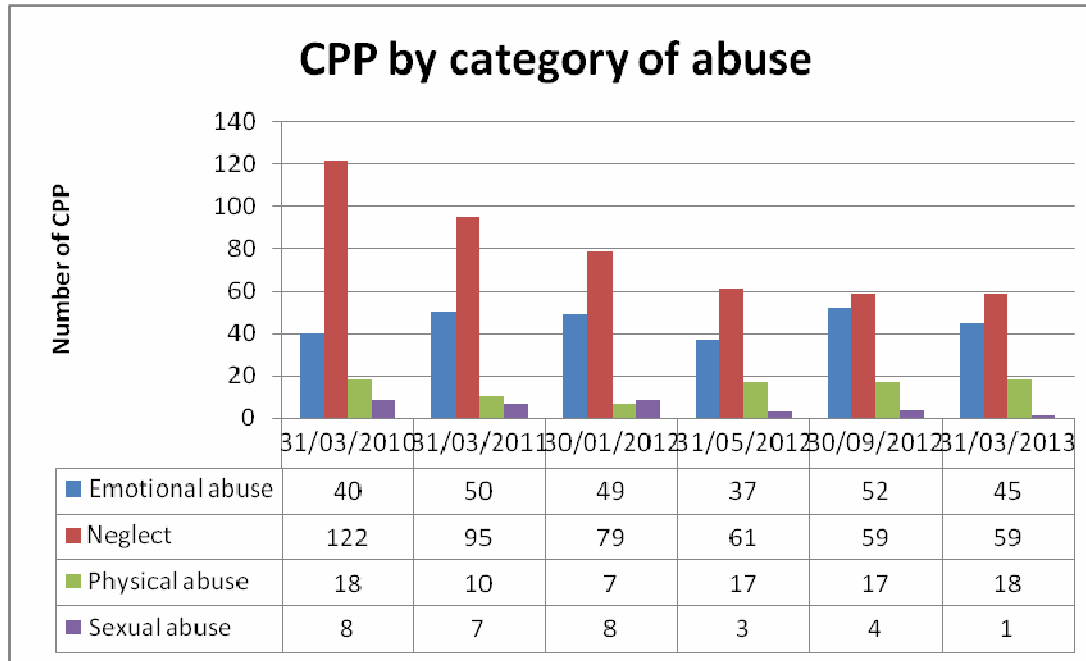
Comparator information for age groups & gender of children with Child Protection plans at 31st March 2012(%)

Source: CiN Census

	Male	Female	Unborn/ Unknown Gender
England	50	48	2
London	49.1	48.4	2.5
Harrow	51.2	47.3	1.5

C4 - CPP by Category of Abuse

Harrow had a high number of children requiring a plan under the category of neglect. Harrow tends to record primary types of abuse as one of the four categories than recording as multiple e.g. emotional abuse may be present in all types of abuse.



Since 31st March 2011 there has been a significant decrease in the number of children requiring a plan under the category of neglect.

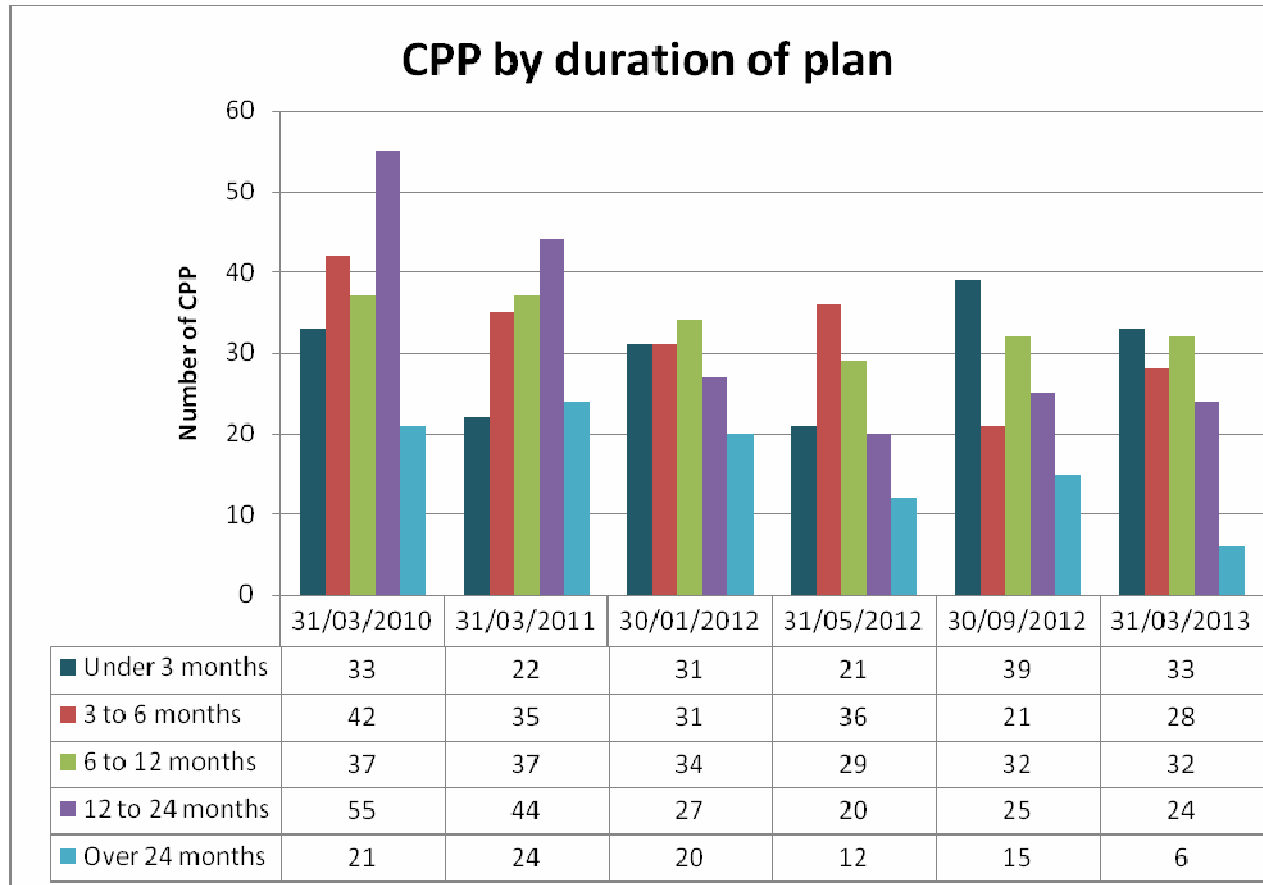
At 31st March 2013, 48% of children had a plan due to concerns about neglect compared to 60% at 31st March 2011

Comparator Info - Category of CPP at 31st March 2012 (%)

	Neglect	Physical Abuse	Sexual Abuse	Emotional Abuse	Multiple
England	42.9	10.1	5	30.9	10.9
London	41.9	8.7	2.6	33.9	11.9
Harrow	55.8	15.5	5.4	23.3	0

Source: CiN Census

C5 - CPP by duration of plan



Co-ordinated work has taken place to progress and end plans, meaning that the numbers in each duration category is more balanced and hopefully will not result in bulges moving through. Work continues to reduce this further and to bring Harrow into line with comparator levels.

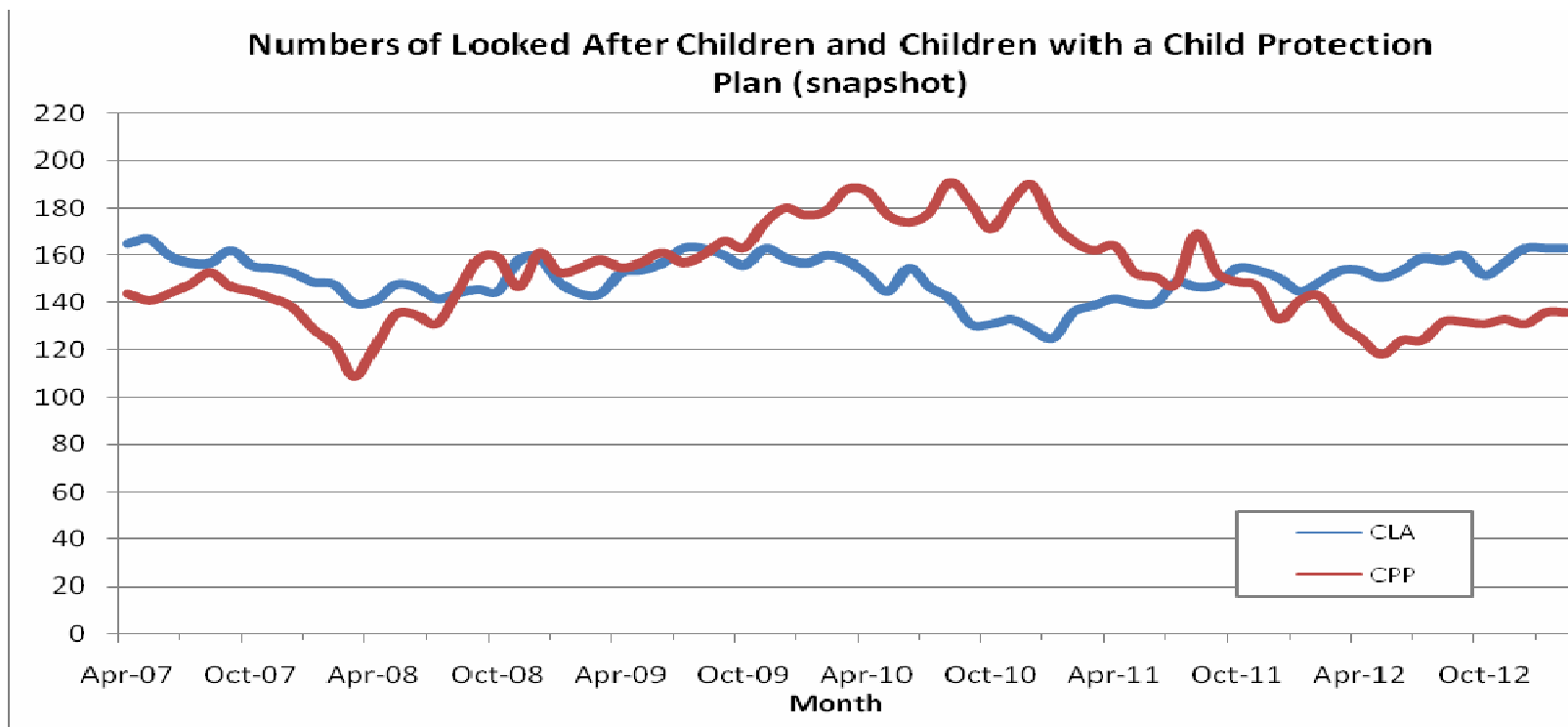
The numbers of short term CPP show some fluctuations but the main changes are in the reductions of long term plans.

Comparator Info – CPP duration at 31st March 2012

(%)Source: CiN Census

	3 months or less	3 - 6 months	6 - 12 Months	1 - 2 years	2 years and over
England	28.6	23.4	27.3	17.2	3.6
London	28.9	20.9	26.3	18.3	5.6
Harrow	33	9.3	29.5	19.4	9.3

Part D – Additional Information – Numbers of CLA and CPP over time



Comparator Info: Rates per 10,000 population at 31.03.2012

	CPP	CLA
Harrow	23.6	29
London	35.7	56
England	37.8	59

CPP numbers have been falling, this is partly due to ongoing work to reduce the numbers of longer term cases. Rates of CPP are below comparator averages at the end of 2012.

Children looked after numbers have risen since 2011 Harrow continues to have a significantly lower rate of CLA than the statistical neighbour average. Harrow's rate per population is just over half the statistical neighbour average. Further analysis of the statistical neighbours group shows that although Harrow is the lowest, Merton, Kingston and Redbridge have similar rates. The average is also pulled up by Croydon which has a very high rate of asylum seeking CLA due to the location of the UK Border Agency facility, plus Hillinadon and Hounslow which are similarly affected by Heathrow.